



IRON FIREMAN[®]

WhirlPower[™] Oil Burners

Model MF-65 Forced Draft Oil Burners

Features

Gives highly efficient, pulsation free operation with boilers having either negative draft or pressure in furnace.

Eliminates need for draft producing chimney or induced draft fan when boiler is sealed because burner fan handles pressure drop across boiler as well as burner.

Frees burner performance of deficiencies due to erratic or excessive overfire draft.

Provides heretofore impossible economy of operation in conventional unsealed steel and cast iron boilers by permitting installation through fire door with refractory floor at mud ring level.

Cuts stand by loss to negligible amount. The small air passages in the burner head minimize heat-robbing cold air flow during burner "off" periods.

High resistance firing head mixes air and fuel instantly giving short clean flame with complete combustion.

No specially shaped refractory combustion chamber necessary to assist combustion.

The WhirlPower[™] MF-65 Oil Burners are complete fuel burning systems, assembled, wired and checked at the factory. The units have all necessary operating controls. All air for combustion is supplied under pressure by the forced draft fan.

Model MF-65-SM Burners are constructed with the fan housing below the draft tube with no burner parts projecting above the draft tube to interfere with boiler cleanout doors. This compact arrangement make these models particularly adaptable to Scotch-Marine type boilers.

Models MF-65 Burners have the conventional arrangement of fan housing above the draft tube and require a minimum amount of space beneath the burner. The same efficient performance is obtained with any model of the MF-65 burner.

Standard model burners are equipped with an ultra-violet flame detector. An option for post-purge is also available. Models are available for fixed fire and low-fire start.

These burners are equipped with direct oil-electric spark ignition.

All burners suitable for flange mounting.

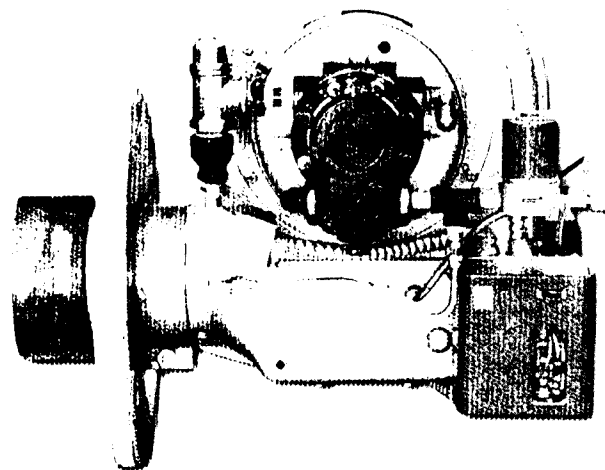
Burners are listed by Underwriters' Laboratories, Inc. and are approved to operate with not heavier than No. 2 fuel oil.

Models available for firing rate of 1.5 to 7.0 GPH.

When Ordering Specify:

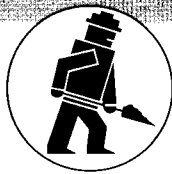
- 1. The Boiler Make and Model Number.**
- 2. Steam Pressure or Water Temperature.**
- 3. Insurance Approval Required.**
- 4. The Burner Model and Catalog Number.**
- 5. Firing Rate-GPH Light Oil.**
- 6. Electrical Characteristics.**

Catalog information subject to change without notice.



Model MF-65 LFS





IRON FIREMAN®

Model MF-65 Forced Draft Oil Burners

Standard Equipment

MF-65 Forced Draft Oil Burners

MAX. FIRING RATE GPH	MIN. HIGH FIRING GPH	MIX. FURN. PRESS IN. W.C.	INS. OPT.	MODEL NUMBER 1)	BLOWER MOTOR HP	FIXED FIRE		LOW FIRE START		Approx. Shipping Weight Pounds
						Terminal Box Fireeye M-II	Cabinet & Fireeye M-II	Terminal Box Fireeye M-II	Cabinet & Fireeye M-II	
2.5	1.5	.20	UL	MF-65-3 UPRIGHT	1/4	STANDARD	OPTIONAL	—	—	80 lbs.
				MF-65-SM-3 INVERTED		STANDARD	OPTIONAL	—	—	
6.0	2.5	.30		MF-65-8 UPRIGHT		STANDARD	OPTIONAL	—	—	
				MF-65-SM-8 INVERTED		STANDARD	OPTIONAL	—	—	
7.0	3.0	.50		MF-65-98 UPRIGHT		—	—	STANDARD	OPTIONAL	85 lbs.
				MF-65-SM-98 INVERTED		—	—	STANDARD	OPTIONAL	

* Maximum firing rates are based upon test results at 1500 ft. elevation with combustion air at 70°F against maximum furnace pressure listed. Capacities may vary dependent upon elevation and air temperature, and combustion chamber configuration dimensions, etc.

1) Model number identification on burner nameplate is required by U.L. to be as follows:

0.75 — 2.00 GPH MF-65-1
 2.00 — 3.50 GPH MF-65-2
 3.50 — 4.50 GPH MF-65-3
 5.00 — 7.00 GPH MF-65-4

Standard Equipment

Manual On-Off Switch	Electronic Comb. Control
Terminal Strip	U.V. Scanner
Direct Spark Ignition, w/10,000v Transformer	Choke Ring
Mounting Flange	Nozzle
Two-stage Fuel Unit — 300 psi	Motor — 115v, 60 cy, 1 ph
Instantaneous Oil Cut-off Valve	Controls — 115v, 60 cy, 1 ph
Housing and Fan	
Access Cover	
Flame Observation Port	

**Suggested Specifications For Iron Fireman
"WhirlPower™" MF-65 Oil Packaged Burner**

Furnish and install as shown on plans _____ Iron Fireman "WhirlPower™" packaged #2 oil burner(s), model number MF-65. Each burner(s) shall be capable of burning _____ gph of No. 2 fuel oil.

Electrical current will be available in the boiler room at _____ volts _____ cycle _____ phase. Blowers' motor to be no smaller than _____ horsepower and 3450 RPM.

The complete burner shall be listed with Underwriters' Laboratories and be forced draft type, factory assembled, wired, and factory fire tested. Equipment to include direct driven blower that supplies combustion air and forces products of combustion thru boiler and stack, a _____ combustion safeguard control system, ultra-violet scanner, manual on-off switch, numbered terminal strips, flame observation port with glass, and internal access.

Upon interruption of electrical power, the burner shall recycle before fuel valve(s) opens; and upon flame failure, the electronic combustion control shall lockout and require manual reset. Burner motor shall not run during "lockout" condition.

Ignition to be direct spark with 10,000 volt secondary transformer.

Oil burning equipment includes two-stage, integral fuel oil pump with single oil solenoid valve for fixed fire. Low fire start unit is supplied with two oil solenoid valves with pressure relief valve to control low fire oil pressure.

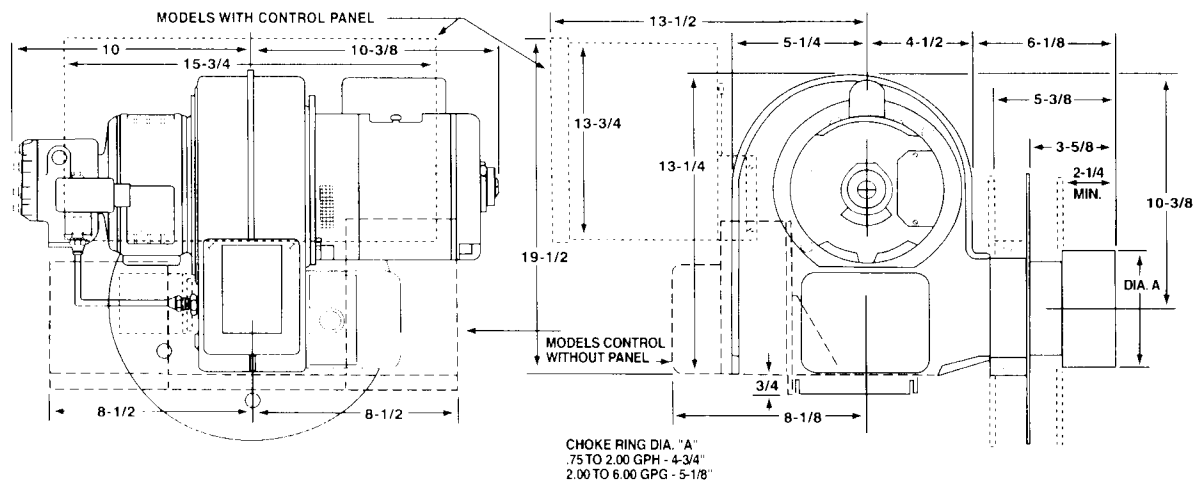
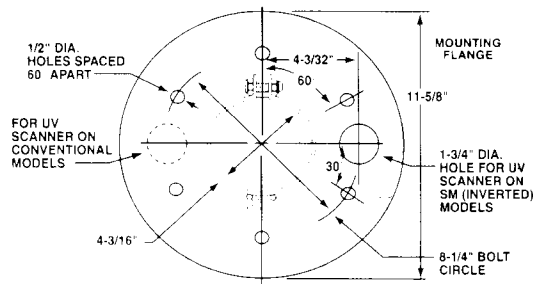
A safety limit control is to be furnished by burner supplier. The control is to be suitable for _____ psi steam (or _____ °F water temperature).

Each burner will be supplied with a wiring diagram, installation, operation, maintenance, service, and replacement parts manual.

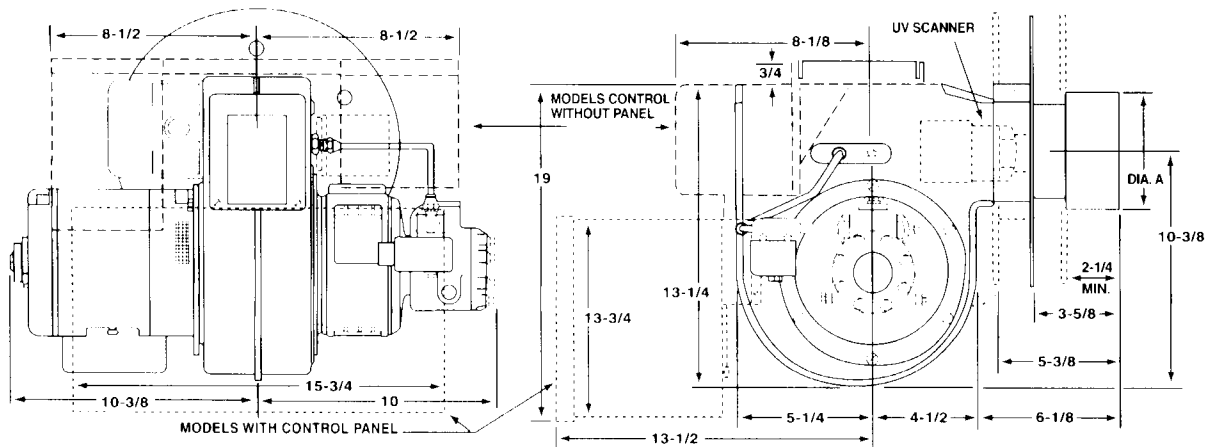
Optional Equipment at Extra Trade Price

Additional Signal Lights	230-60-1, 208-60-3,
Alarms	or 460-60-3 motors.
Limit Control	See Price Lists for other optional controls.

Dimensions



Upright Model Shown



SM (Inverted) Model Shown



IRON FIREMAN®

551 S. County Line Rd. • Franklin Park, IL 60131-1013 • Ph: 630.694.5500
 Fax: 630.694.2230 • www.vaporpower.com • www.ironfireman.com

Form No. 80-2010C

Printed in U.S.A.

2/05